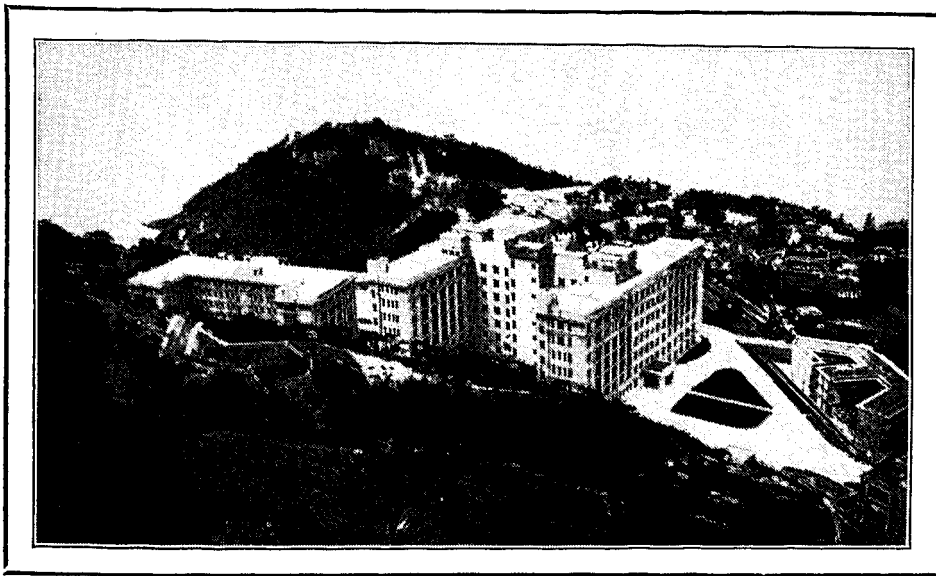


## THE HOSPITAL WORLD.

Queen Mary will open the new Nurses' Home of Westminster Hospital in Horseferry Road, S.W., next February. The Home will be the first of the new buildings to be completed on this site. A sum of £150,000 is still required to complete the fund for removing and rebuilding the main hospital.

Queen Mary has consented to open on October 14th, Riddell House, the new Nurses' Home that has been presented to the Treasurer and Governors of St. Thomas's Hospital by Lady Riddell as a memorial to the late Lord Riddell.

A silver chalice, paten and alms dish have been presented to the chapel of Westminster Hospital, says the *Daily Telegraph*, by a few friends on the Metropolitan Railway, in memory of Mr. John Sloane Anderson, formerly general manager of the Metropolitan Railway, and afterwards treasurer and solicitor to the London Passenger Transport Board. The chalice is based on one found in York Minster



THE NEW QUEEN MARY HOSPITAL, HONG KONG.

in the grave of Archbishop de Melton, who died about 600 years ago.

The Archbishop of Canterbury gave another striking example of his love for children at the Festival Dinner of the Princess Elizabeth of York Hospital for Children at the Mansion House.

"The children of East London are beyond question the most lively, humorous, sprightly and engaging in any part of the world," said the Primate.

"I have always been delighted," he continued, "to watch them play in those dingy streets, transforming them by their imagination into the happy land of make-believe."

The Archbishop then spoke of the new Princess Elizabeth Hospital which, he hoped, would soon rise among the lovely Surrey woods. "What is more fitting than that this hospital at Banstead should be associated with the name of that fascinating little lady, whom the whole nation has adopted as its own child?"

Following a gift of £10,000 by Mr. E. W. Meyerstein and an offer by Mr. S. Garton of his family home at Banstead, said the Primate, the new Princess Elizabeth Hospital was being built. The project was a wonderful

dream which must come true. The cost would be about £200,000. There was already £70,000 available, but £130,000 had still to be raised in the next 12 months unless the work was to be stopped.

Nature herself, the Archbishop observed, would be the best and most skilful nurse, bringing health, happiness and beauty to the children.

Brigadier-General Sir Hill Child, chairman of the hospital, announced donations, at the dinner totalling £5,701.

A telegram from the Queen was read wishing every success to the festival.

Just now when refugees are pouring into Hong Kong, and the resources of the island are strained to the utmost, when cases of cholera are notified and the doctors and nurses must be having a most anxious time, it is good at least to know that the new Queen Mary Hospital, recently opened, and marvellously situated on a hill overlooking the sea, is capable of holding 500 beds and is equipped with every modern convenience. Sister Ethel Riley, F.B.C.N., writing not long since, and unaware of the stress and strain to which the island so soon would be subjected, wrote: "It is a delightful feeling to look forward to working in a modern hospital." With the outbreak of war between Japan and China the resources both of the hospital and the island are now utilised to capacity, and the Nursing Staff must be glad indeed that the new hospital is available, for the patients will be nursed under the best possible conditions and the strain on the Nursing Staff will be lessened by the modern arrangements and equipment.

At the moment of writing Sister Riley stated there were six Sisters, four Nurses and two dressers (male Nurses) in the hospital, but it was anticipated that the rest of the staff and patients from the Government Civil Hospital would begin to move in at the end of the month. The old Government

Civil Hospital was very dilapidated and the Nursing Staff worked under many difficulties. Around the hospital had grown up slums, many of the people dried fish on the roofs of the houses, and the smell on a hot summer day was indescribable.

The University examinations are taking place just now—the Professors and Students are all busy. Also Government State Examinations for Nurses and Dressers are in full swing. At the moment everybody seems to be working very hard.

We shall follow with close interest, as far as may be, the work of the Sisters in the Queen Mary Hospital, well knowing that everything possible that skill and kindness can do will be done for those who pass into the care of Sister Ethel Riley and her colleagues.

### NEW MATERNITY UNIT.

Countess Baldwin has promised to open the new maternity unit at West Kent General Hospital, Maidstone, on October 26th. The unit is being established by the Maidstone Corporation and hospital authorities jointly on a basis of equal costs, and is believed to be the first in the country to be so provided.

[previous page](#)

[next page](#)